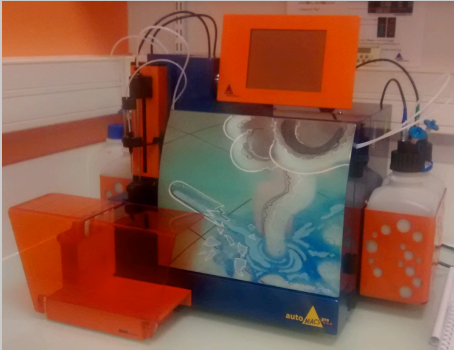


# AutoMACS

Staff : H. Fohrer-Ting et E. Devevre.

## Characteristics



- ✓ L2 environment
- ✓ Cooling racks
- ✓ Automatic labelling
- ✓ Positive selection
- ✓ Negative selection
- ✓ Increased capacity

Standardisation

Robustness

Time saving

## Key points

- Cell suspension aggregates and bubble free
- Sample filtration before the experimentation

## Characteristics

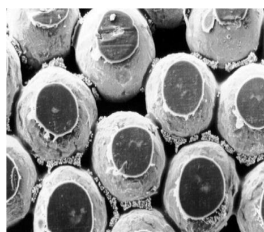
- Instrument-controlled labelling
- Standardized cell separation for reproducible, user-independent results
- Processing of multiple samples
- Twice the LS columns capacity: up to  **$4 \times 10^9$  total cells.  $2 \times 10^8$  stained cells.**
- Reduce cell sorting user time by enriching the target population first.

## Applications

- Choice of programs for positive and negative selection
- Isolation directly from whole blood or bone marrow while avoiding red-blood cell lysis and density gradient centrifugation steps.
- Enrich given hematopoietic cells from tumor samples without clogging the systems.

## Downstream applications

- Further flow cytometry analysis and cell sorting
- Molecular biology studies
- Lineage-specific chimerism studies
- Functional studies



*Increased contact surface with the beads*