

NOTE TECHNIQUE

CICC

N°001 – v001

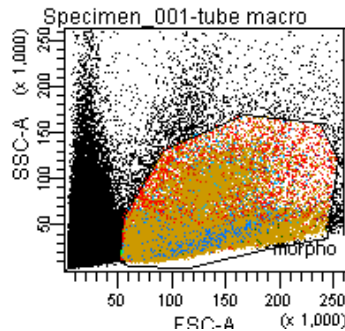
SORTING: GATING STRATEGY OPTIMIZATION

This strategy is especially important when different populations of different autofluorescence are sorted or analyzed.

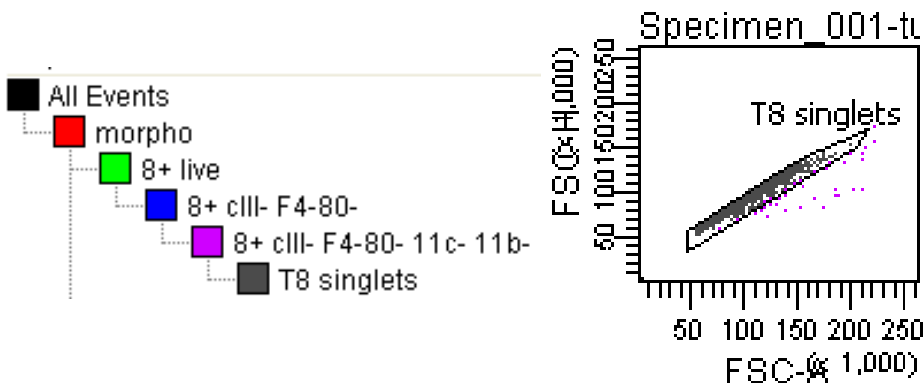
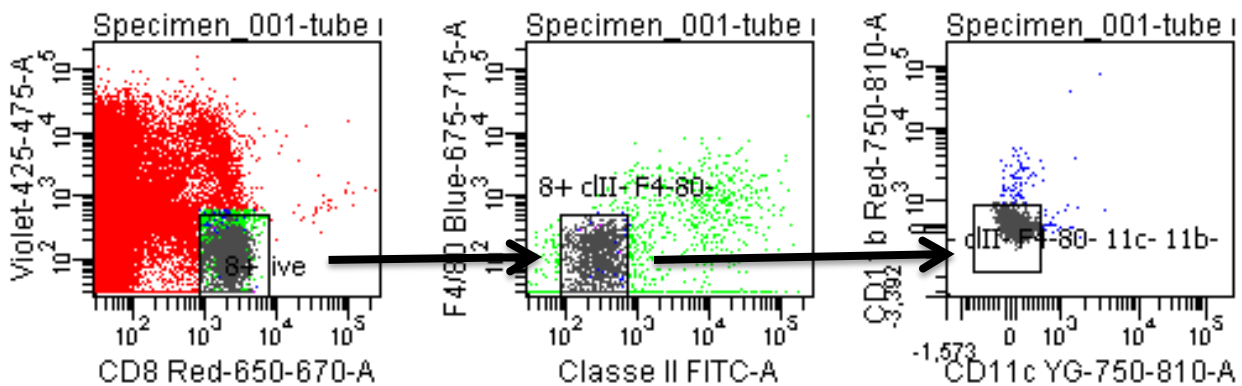
Tips:

- ✓ Make use of all markers available in the tube of interest
- ✓ Do the singlet discrimination last, once the target population has been well characterized.

1. Draw a general gate on the morphology



2. Use all available markers to define the CD8+ lymphocytes: make negative gates on viability, and all available and relevant markers.



3. Make the singlet gate. Use this gate to sort the LT8 cells.