



**CENTRE DE RECHERCHE**  
DES CORDELIERS

# RÉUNION NOUVEAUX ENTRANTS / NEWCOMERS' MEETING

30 NOVEMBRE 2022



- 9:30 : **Intro / Presentation of the Cordeliers Research Center** - Jessica Zucman-Rossi, Director of the Center & Catherine d'Astier, General Secretary
- 9:45 am: **The Cordelier Campus, a team at your service** - Marie Donatien, Head of the administrative and logistic service of the Campus
- 9:55 am: **What is Prevention? Who is it for?** - Marie-Noëlle Navas, Prevention Officer at the CRC
- 11:15 am: **Security and fire safety** - Fabrice Ferrani, Single Security Manager
- 11:25 : **CRC platforms, uses and good practices** - Chiara Maiuri, Scientific Director of the platforms
- 11:45 : **Responsible and honest conduct of research** - Ghislaine Filliatreau, Scientific Integrity Officer - Inserm
- 12:15 : **Internal and external communication at CRC** - Isabelle Tratner, Director of Communication
- 12h30 pm: **Lunch**



**CENTRE DE RECHERCHE**  
DES CORDELIERS

## Intro / Presentation of the Cordeliers Research Center

The Centre de Recherche des Cordeliers (CRC) is a research center of excellence located in the center of Paris. CRC develops fundamental, translational and clinical research in the field of biology and health.

CRC's research projects are multidisciplinary, mainly in the fields of oncology, immunology, the study of metabolism and the major physiological functions of the body in close collaboration with the University-Hospital Group Paris Centre and the network of 40 hospitals of the Assistance Publique-Hôpitaux de Paris (AP-HP).

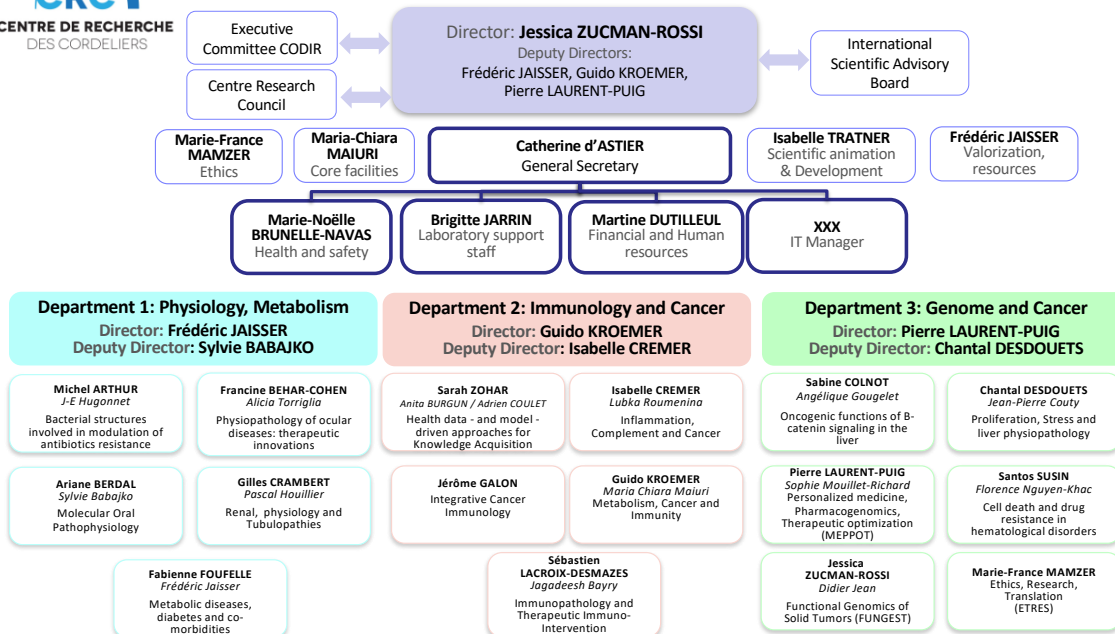
In January 2022, CRC has more than 500 people working in 16 teams in three departments. High-performance tools for imaging, genomics, cell culture, functional exploration, and bioinformatics are available to researchers through the Center's technological core facilities

CRC is headed by Professor Jessica Zucman-Rossi, a specialist in oncology and tumor genomics. The Cordeliers Research Centre is administrated by Inserm, Sorbonne University, and Université Paris Cité.

# Intro / Presentation of the Cordeliers Research Center



## Centre de Recherche des Cordeliers – UMRS 1138 (540 people)



### Core facilities: Maria-Chiara MAIURI

CEF : Functional exploration centre (Valérie CHAUFFETON)  
 CHIC : Centre of Histology, Imaging and Cytometry (Christophe KLEIN)  
 CGB : Genotyping and Biochemistry centre (Hermine KAKANAKOU)  
 L2 / L3 Laboratory (Maxime LECERF)

Jessica Zucman-Rossi



Director

Oct 2022

Localisation  
des équipes,  
des plateformes,  
et de l'administration.

### CRC EQUIPES:

#### Escalier **(A)** :

- 25** C. DESDOUETS 1<sup>er</sup> étage
- 11** G. KROEMER 2<sup>ème</sup> étage
- 28** J. ZUCMAN-ROSSI 1<sup>er</sup> étage

#### Escalier **(A<sup>2</sup>)** :

- 26** P. LAURENT-PUIG RDC

#### Escalier **(B)** :

- 17** F. BEHAR-COHEN 2<sup>ème</sup> droite
- 12** M. ARTHUR 3<sup>ème</sup> gauche

#### Escalier **(D)** :

- 22** S. ZOHAR 1<sup>er</sup> étage

#### Escalier **(E)** :

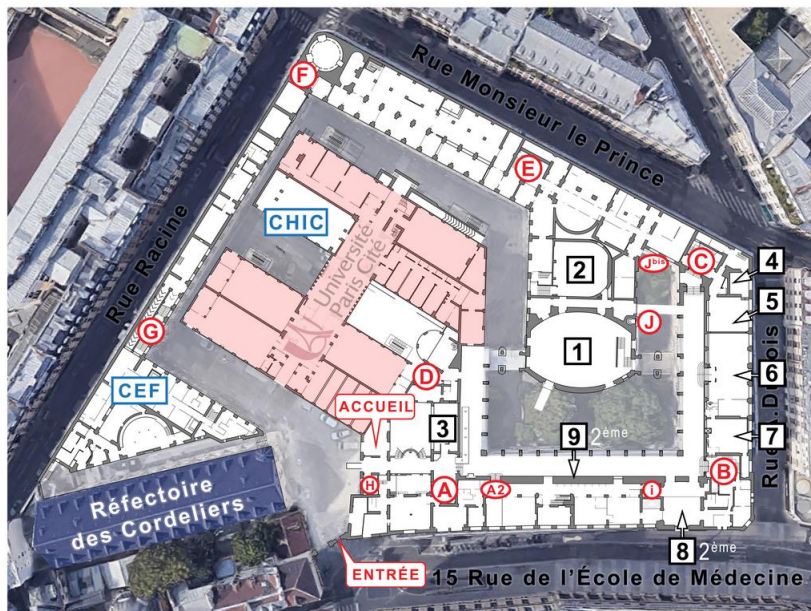
- 05** A. BERDAL 2<sup>ème</sup> gauche
- 08** F. FOUFELLE 3<sup>ème</sup> gauche
- 24** S. COLNOT 1<sup>er</sup> droite
- 13** I. CREMER 3<sup>ème</sup> droite
- 15** J. GALON 3<sup>ème</sup> droite
- 16** S. LACROIX-DESMAZES 4<sup>ème</sup> droite
- 19** S. SUSIN 2<sup>ème</sup> droite

#### Escalier **(F)** :

- 27** MF. MAMZER 2<sup>ème</sup> Mezzanine

#### Escalier **(J) bis** :

- 03** G. CRAMBERT RDC



### CRC PLATEFORMES:

- CEF** Centre d'explorations fonctionnelles Esc. **(G)** RDC & 1<sup>er</sup> étage
- CGB** Plateau Technique de Génotypage Esc. **(F)** 2<sup>ème</sup> étage
- CHIC** Centre Histologie Imagerie Cytométrie RDC bât. surélévation
- OPS** Plateforme OncoPhénoScreen Esc. **(A)** 2<sup>ème</sup> étage
- L2** Esc. **(F)** 2<sup>ème</sup> étage
- L3** Esc. **(E)** 2<sup>ème</sup> étage

### CRC ADMINISTRATION:

- CRC** Secrétariat général & communication Esc. **(B)** 2<sup>ème</sup> mezzanine
- CRC** Pôle gestion Esc. **(C)** 1<sup>er</sup> étage & Esc. **(A)** RDC

### ACCÈS CAMPUS:

#### ACCÈS VISITEUR:

15, Rue de l'École de Médecine

#### ACCÈS LIVRAISON:

15, Rue de l'École de Médecine

#### ACCÈS PARKING:

Parking Saemes  
21, Rue de l'École de Médecine

**(E)** Escaliers

  Bâtiment en surélévation

### SALLES & AMPHITHEATRES:

#### RDC (accès PMR)

- 1** Amphithéâtre Farabeuf
- 2** Amphithéâtre Bilski-Pasquier

#### RDC (accès 1er sous-sol)

- 3** Salle Danton

#### RDC accès par Escaliers **(C)**

- 4** Salle de réunion
- 5** Salle des thèses

#### RDC entre Escaliers **(B) & (C)**

- 6** Salle Marie Curie
- 7** Salle Club

#### 2<sup>ème</sup> étage accès par Esc. **(B)**

- 8** Amphithéâtre G.Roussy
- 9** Salle Pérec



**CENTRE DE RECHERCHE**  
DES CORDELIERS

## Welcome to the Cordeliers Research Center

### Your first steps

- Approach your team's HR manager and provide him/her with a copy of your employment contract or internship agreement.  
He/she will guide you in taking up your position.
- Contact the prevention assistant (PA) of your team and agree on an appointment for the regulatory reception of occupational risks in your laboratory.
- Access to the buildings : a personal badge, a key or an access code given to you by your manager.
- Register in the CRC website directory and ask for a mail address

### > For more information

<https://www.crcordeliers.fr/extranet/accueil-extranet/>