



**CENTRE DE RECHERCHE**  
DES CORDELIERS

# RÉUNION NOUVEAUX ENTRANTS / NEWCOMERS' MEETING

7 MARS 2024



- 9:30 **Intro / Presentation of the Cordeliers Research Center** - Jessica Zucman-Rossi, Director of the Center & Catherine d'Astier, General Secretary
- 9:45 **What is Prevention? Who is it for?** - Marie-Noëlle Navas, Prevention Officer at the CRC
- 11:30 **CRC platforms, uses and good practices** - Chiara Maiuri, Scientific Director of the platforms
- 11:45 **Internal and external communication at CRC** - Isabelle Tratner, Director of Communication
- 12:00 **CRC's various committees**
- 12:30 **Pizzas Party**



**CENTRE DE RECHERCHE**  
DES CORDELIERS

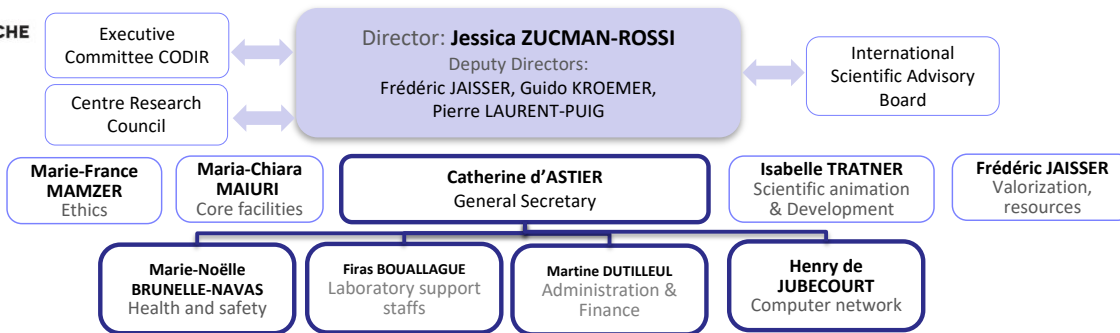
## Intro / Presentation of the Cordeliers Research Center

The Centre de Recherche des Cordeliers (CRC) is a research center of excellence located in the center of Paris. CRC develops fundamental, translational and clinical research in the field of biology and health.

CRC's research projects are multidisciplinary, mainly in the fields of oncology, immunology, the study of metabolism and the major physiological functions of the body in close collaboration with the University-Hospital Group Paris Centre and the network of 40 hospitals of the Assistance Publique-Hôpitaux de Paris (AP-HP).

In January 2022, CRC has more than 500 people working in 16 teams in three departments. High-performance tools for imaging, genomics, cell culture, functional exploration, and bioinformatics are available to researchers through the Center's technological core facilities

CRC is headed by Professor Jessica Zucman-Rossi, a specialist in oncology and tumor genomics. The Cordeliers Research Centre is administrated by Inserm, Sorbonne University, and Université Paris Cité.



## Department 1: Physiology, Metabolism Director: Frédéric JAISSE

**Michel ARTHUR**  
J-Emmanuel Hugonnet  
Bacterial structures involved in modulation of antibiotics resistance

**Francine BEHAR-COHEN**  
Alicia Torriglia  
Physiopathology of ocular diseases: therapeutic innovations

**Ariane BERDAL**  
Benjamin Fournier  
Molecular Oral Pathophysiology

**Gilles CRAMBERT**  
Pascal Houillier  
Renal, physiology and Tubulopathies

**Fabienne FOUFELLE**  
Frédéric Jaisse  
Metabolic diseases, diabetes and co-morbidities

## Department 2: Immunology and Cancer Director: Guido KROEMER Deputy Director: Isabelle CREMER

**Sarah ZOHAR**  
Anita BURGUN / Adrien COULET  
Information sciences to support personalized medicine

**Isabelle CREMER**  
Lubka Roumenina  
Inflammation, Complement and Cancer

**Jérôme GALON**  
Integrative Cancer Immunology

**Guido KROEMER**  
Maria Chiara Maiuri  
Metabolism, Cancer and Immunity

**Sébastien LACROIX-DESMAZES**  
Jordan Dimitrov  
Immunopathology and Therapeutic Immunointervention

## Department 3: Genome and Cancer Director: Pierre LAURENT-PUIG Deputy Director: Chantal DESDOUETS

**Sabine COLNOT**  
Angélique Gougelet  
Oncogenic functions of B-catenin signaling in the liver

**Chantal DESDOUETS**  
Jean-Pierre Couty  
Proliferation, Stress and liver physiopathology

**Pierre LAURENT-PUIG**  
Sophie Mouillet-Richard  
Personalized medicine, Pharmacogenomics, Therapeutic optimization (MEPPOT)

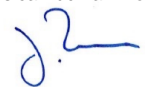
**Santos SUSIN**  
Florence Nguyen-Khac  
Cell death and drug resistance in hematological disorders

**Jessica ZUCMAN-ROSSI**  
Didier Jean  
Functional Genomics of Solid Tumors (FUNGEST)

**Marie-France MAMZER**  
Ethics, Research, Translation (ETRES)

**Core facilities: Maria-Chiara MAIURI**  
CEF : Functional exploration centre (Valérie CHAUFFETON)  
CHIC : Centre of Histology, Imaging and Cytometry (Christophe KLEIN)  
CGB : Genotyping and Biochemistry centre (Hermine KAKANAKOU)  
L2 Laboratory (Audrey DIDELOT & Delphine LE CORRE)

Jessica Zucman-Rossi



Director  
Feb 2024

Localisation  
des équipes,  
des plateformes,  
et de l'administration.

### CRC EQUIPES:

#### Escalier **(A)** :

- [25]** C. DESDOUETS 1<sup>er</sup> étage
- [11]** G. KROEMER 2<sup>ème</sup> étage
- [28]** J. ZUCMAN-ROSSI 1<sup>er</sup> étage

#### Escalier **(A<sup>2</sup>)** :

- [26]** P. LAURENT-PUIG RDC

#### Escalier **(B)** :

- [17]** F. BEHAR-COHEN 2<sup>ème</sup> droite
- [12]** M. ARTHUR 3<sup>ème</sup> gauche

#### Escalier **(D)** :

- [22]** S. ZOHAR 1<sup>er</sup> étage

#### Escalier **(E)** :

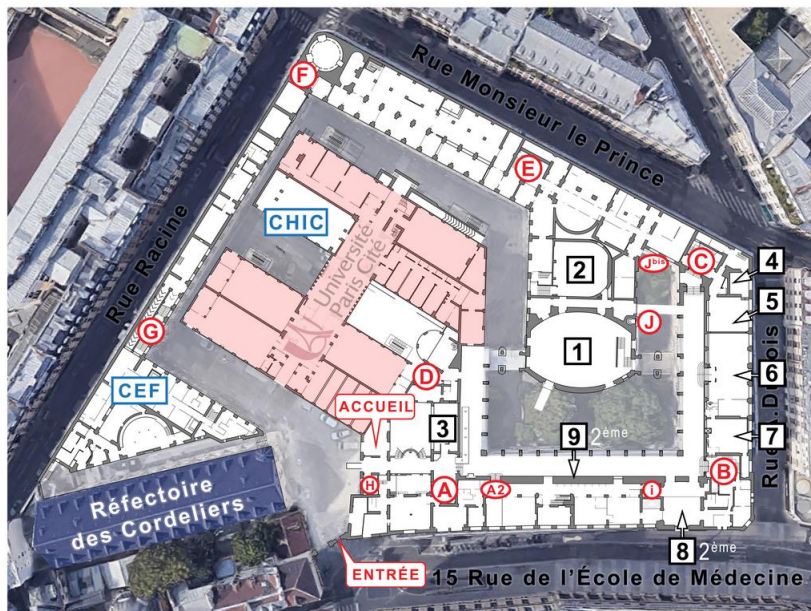
- [05]** A. BERDAL 2<sup>ème</sup> gauche
- [08]** F. FOUFELLE 3<sup>ème</sup> gauche
- [24]** S. COLNOT 1<sup>er</sup> droite
- [13]** I. CREMER 3<sup>ème</sup> droite
- [15]** J. GALON 3<sup>ème</sup> droite
- [16]** S. LACROIX-DESMAZES 4<sup>ème</sup> droite
- [19]** S. SUSIN 2<sup>ème</sup> droite

#### Escalier **(F)** :

- [27]** MF. MAMZER 2<sup>ème</sup> Mezzanine

#### Escalier **(J) bis** :

- [03]** G. CRAMBERT RDC



### CRC PLATEFORMES:

- [CEF]** Centre d'explorations fonctionnelles Esc. **(G)** RDC & 1<sup>er</sup> étage
- [CGB]** Plateau Technique de Génotypage Esc. **(F)** 2<sup>ème</sup> étage
- [CHIC]** Centre Histologie Imagerie Cytométrie RDC bât. surélévation
- [OPS]** Plateforme OncoPhénoScreen Esc. **(A)** 2<sup>ème</sup> étage
- [L2]** Esc. **(F)** 2<sup>ème</sup> étage
- [L3]** Esc. **(E)** 2<sup>ème</sup> étage

### CRC ADMINISTRATION:

- [CRC]** Secrétariat général & communication Esc. **(B)** 2<sup>ème</sup> mezzanine
- [CRC]** Pôle gestion Esc. **(C)** 1<sup>er</sup> étage & Esc. **(A)** RDC

### ACCÈS CAMPUS:

#### ACCÈS VISITEUR:

15, Rue de l'École de Médecine

#### ACCÈS LIVRAISON:

15, Rue de l'École de Médecine

#### ACCÈS PARKING:

Parking Saemes  
21, Rue de l'École de Médecine

**(E)** Escaliers

■ Bâtiment en surélévation

### SALLES & AMPHITHEATRES:

#### RDC (accès PMR)

- [1]** Amphithéâtre Farabeuf
- [2]** Amphithéâtre Bilski-Pasquier

#### RDC (accès 1er sous-sol)

- [3]** Salle Danton

#### RDC accès par Escaliers **(C)**

- [4]** Salle de réunion
- [5]** Salle des thèses

#### RDC entre Escaliers **(B) & (C)**

- [6]** Salle Marie Curie
- [7]** Salle Club

#### 2<sup>ème</sup> étage accès par Esc. **(B)**

- [8]** Amphithéâtre G.Roussy
- [9]** Salle Pérec



**CENTRE DE RECHERCHE**  
DES CORDELIERS

## Welcome to the Cordeliers Research Center

### Your first steps: ask for the Welcome Booklet

- Approach your team's HR manager and provide him/her with a copy of your employment contract or internship agreement. He/she will guide you in taking up your position.
- Contact the prevention assistant (PA) of your team and agree on an appointment for the regulatory reception of occupational risks in your laboratory.
- Access to the buildings : a personal badge, a key or an access code given to you by your manager.
- Register in the CRC website directory and ask for a mail address